

# Welcome to our Corporate Identity Guidelines

# Contents

## Logo

- 2 The logo
- 3 Colour variations
- 4 Logo construction
- 5 Graduation construction
- 6 Secondary graduation construction
- 7 Logo positioning
- 8 Graduation scaling
- 9 Examples
- 10 Primary colours
- 11 Secondary colours

## Typography

- 13 Primary fonts
- 14 Secondary fonts
- 15 Point sizes
- 16 Headings
- 17 Screen fonts
- 18 Screen fonts point sizes
- 19 Screen fonts headings

## Website

- 21 Primary colours
- 22 Colour tints
- 23 Secondary colours
- 24 Graphics
- 25 Graphics construction
- 26 Buttons
- 27 Tabs
- 28 Tabs continued
- 29 Dividers
- 30 Frames
- 31 Pictures and Text
- 32 Type styles & sizes
- 33 Numbers

## Stationary

- 35 Business card
- 36 Letterhead
- 37 Continuation sheet
- 38 Compliment slip
- 39 DL Envelope
- 40 DL Envelope with address
- 41 A4 Envelope
- 42 Support & Credits

# Logo

- 2 The logo
- 3 Colour variations
- 4 Logo construction
- 5 Graduation construction
- 6 Secondary graduation construction
- 7 Logo positioning
- 8 Graduation scaling
- 9 Examples
- 10 Primary colours
- 11 Secondary colour

The shop-apotheke logo may appear on its own or with a yellow graduation.



shop-apotheke.com



shop-apotheke.com

The logo may only be used in the following three colour variations:

Colour

Greyscale (50% black)

Black



The logo must always be applied consistently, with the two sizes of the typeface kept in the ratio 3:2. (I.e. the x height of '.com' is two-thirds the x height of 'shop-apotheke').

The text part of the logo is spaced proportionally away from the apotheker A. This space is equal to the width of the right-hand bar of the apotheker A, as shown.



## Graduation construction

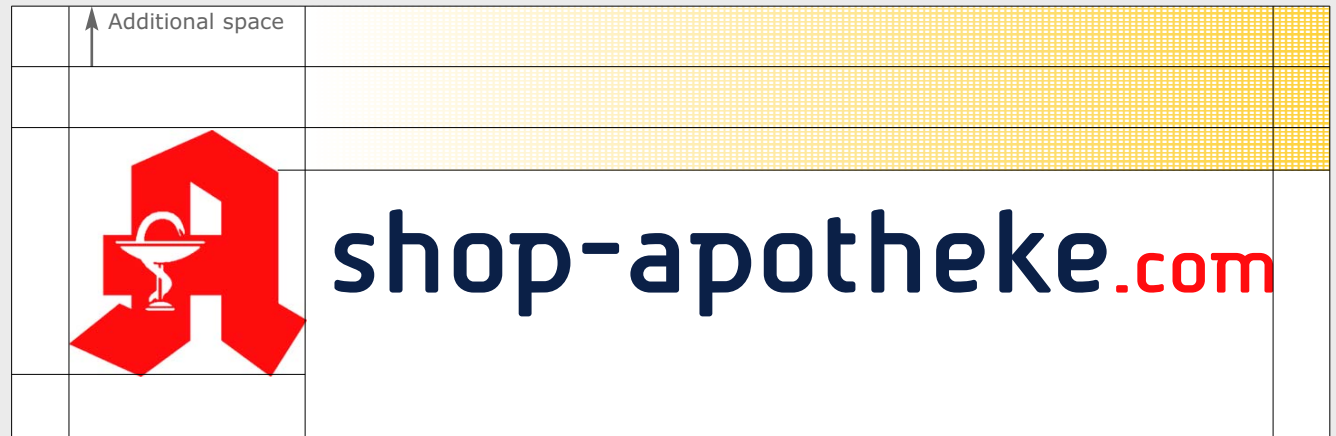
The apotheke A must always appear on a clear white background, with the yellow graduation positioned as shown.

Please observe this rule and insure that no other graphic elements (such as text or imagery) intrude into the clear space zone.

	Clear space zone		
			
		<b>shop-apotheke.com</b>	

## Secondary graduation construction

For certain applications the graduation can be enlarged by adding this additional space to the top of the logo.





The logo must always be positioned in the top left corner of an application but can be scaled proportionally.



Graduation scaling

The graduation always extends to the right to cover the full width of the application. The extension of the graduation is solid yellow.



The examples shown illustrate some possible incorrect uses of the logo.



1 Correct: positioned in the top left corner with the required space from the logo to the edges

2 Incorrect: positioned too close to the edges

3 Incorrect: positioned too far from the left edge

4 Incorrect: The background graduation overlaps the logo.

### Primary colours

These are the primary colours used for the shop-apotheke logo and graduation. The graduation in the logo always graduates from white to yellow.

The shop-apotheke colours are defined as:

1. Pantone colours for printing with a specific colour
2. CMYK for four-colour offset printing
3. RGB for usage on screen

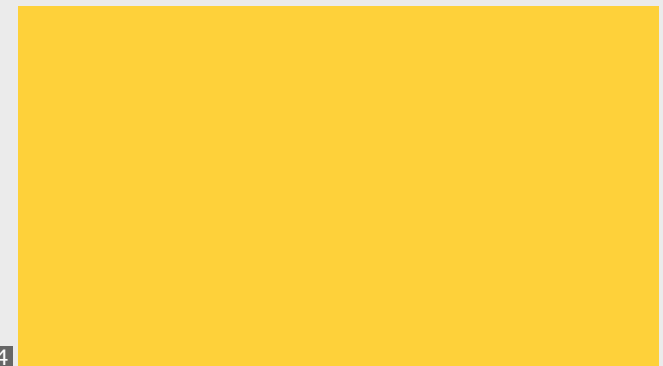
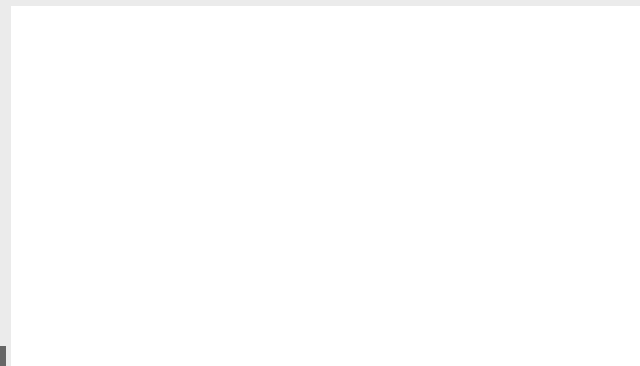


**1** Blue:  
Pantone 648 C / 648 U  
C:96 M:64 Y:20 K:44  
R:21 G:39 B:72

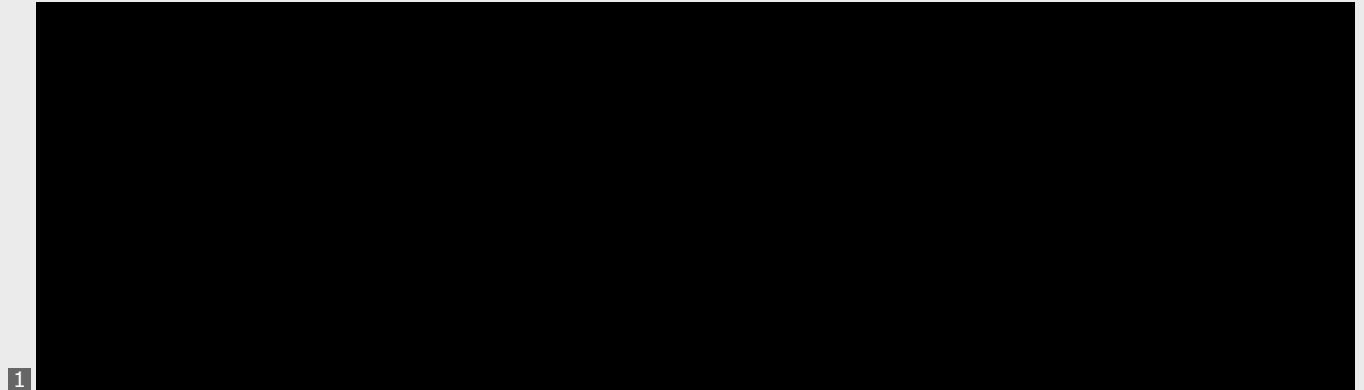
**2** Red:  
Pantone Red 032 C / Red 032 U  
C:0 M:95 Y:100 K:0  
R:209 G:0 B:27

**3** White:  
C:0 M:0 Y:0 K:0  
R:100 G:100 B:100

Yellow:  
**4** Pantone 128 C / 128 U  
C:0 M:18 Y:76 K:0  
R:245 G:207 B:57



These are the secondary colours used for greyscale and black & white applications.



1 Black:  
Pantone Black  
C:0 M:0 Y:0 K:100  
R:0 G:0 B:0

2 Black 50%:  
Pantone Black (50%)  
C:0 M:0 Y:0 K:50  
R:0 G:0 B:0

# Typography

- 13 Primary fonts
- 14 Secondary fonts
- 15 Point sizes
- 16 Headings
- 17 Screen fonts
- 18 Screen fonts point sizes
- 19 Screen fonts headings

The font used for the logo is Beta Semi bold. This font is also available in regular.

## Beta Semi (Regular)

ABCDEFGHIJKLMNOPQRSTUVWXYZ  
abcdefghijklmnopqrstuvwxyz  
1234567890

---

## Beta Semi (Bold)

ABCDEFGHIJKLMNOPQRSTUVWXYZ  
abcdefghijklmnopqrstuvwxyz  
1234567890

The secondary font is Beta Sans which is used for all the stationary and body text of letters.

## Beta Sans (Regular)

ABCDEFGHIJKLMNOPQRSTUVWXYZ

abcdefghijklmnopqrstuvwxyz

1234567890

---

## Beta Sans (Bold)

ABCDEFGHIJKLMNOPQRSTUVWXYZ

abcdefghijklmnopqrstuvwxyz

1234567890



## Point sizes

The font sizes shown are standard sizes to be used in all forms of communication.

Beta Sans (Regular) 10pt, Leading 12.5pt

This is dummy text to show the correct point size, leading, etc. This is dummy text to show the correct point size, leading, etc. This is dummy text to show the correct point size, leading, etc. This is dummy text to show the correct point size, leading, etc. This is dummy text to show the correct point size, leading, etc. This is dummy text to show the correct point size, leading, etc. This is dummy text to show the correct point size, leading, etc. This is dummy text to show the correct point size, leading, etc. This is dummy text to show the right point size, leading, etc.

---

Beta Sans (Regular) 8pt, Leading 10pt

This is dummy text to show the correct point size, leading, etc. This is dummy text to show the correct point size, leading, etc. This is dummy text to show the correct point size, leading, etc. This is dummy text to show the correct point size, leading, etc. This is dummy text to show the correct point size, leading, etc. This is dummy text to show the correct point size, leading, etc. This is dummy text to show the correct point size, leading, etc. This is dummy text to show the correct point size, leading, etc. This is dummy text to show the right point size, leading, etc. This is dummy text to show the correct point size, leading, etc. This is dummy text to show the correct point size, leading, etc. This is dummy text to show the correct point size, leading, etc. This is dummy text to show the right point size, leading, etc. This is dummy text to show the correct point size, leading, etc.



Verdana is used for body copy in digital media due to its high legibility and clarity. This font is available in regular and bold.

**Please note: The Euro sign should always be set in Arial.**

## Verdana (Regular)

ABCDEFGHIJKLMNOPQRSTUVWXYZ  
abcdefghijklmnopqrstuvwxyz  
1234567890

---

## Verdana (Bold)

**ABCDEFGHIJKLMNOPQRSTUVWXYZ**  
**abcdefghijklmnopqrstuvwxyz**  
**1234567890**





# Website

- 21 Primary colours
- 22 Colour tints
- 23 Secondary colours
- 24 Graphics
- 25 Graphics construction
- 26 Buttons
- 27 Tabs
- 28 Tabs continued
- 29 Dividers
- 30 Frames
- 31 Pictures and Text
- 32 Type styles & sizes
- 33 Numbers

These are the colours used for the main colour scheme of the webpages.

**1** FF D7 5D  
C:0 M:18 Y:76 K:0  
R:245 G:207 B:57

**2** FF AF 4C  
C:0 M:21 Y:62 K:0  
R:246 G:201 B:92

**3** FF 91 3F  
C:0 M:34 Y:71 K:0  
R:239 G:172 B:67

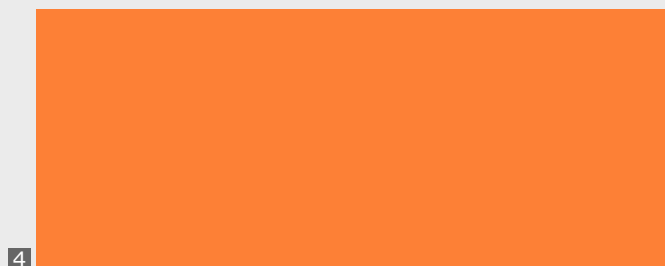
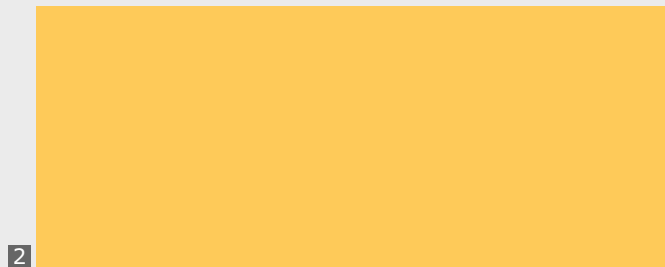
**4** FF 79 35  
C:0 M:50 Y:75 K:0  
R:232 G:137 B:55

**5** FF 61 2A  
C:0 M:62 Y:72 K:0  
R:227 G:109 B:57

**6** FE 45 1E  
C:0 M:75 Y:84 K:0  
R:219 G:76 B:38

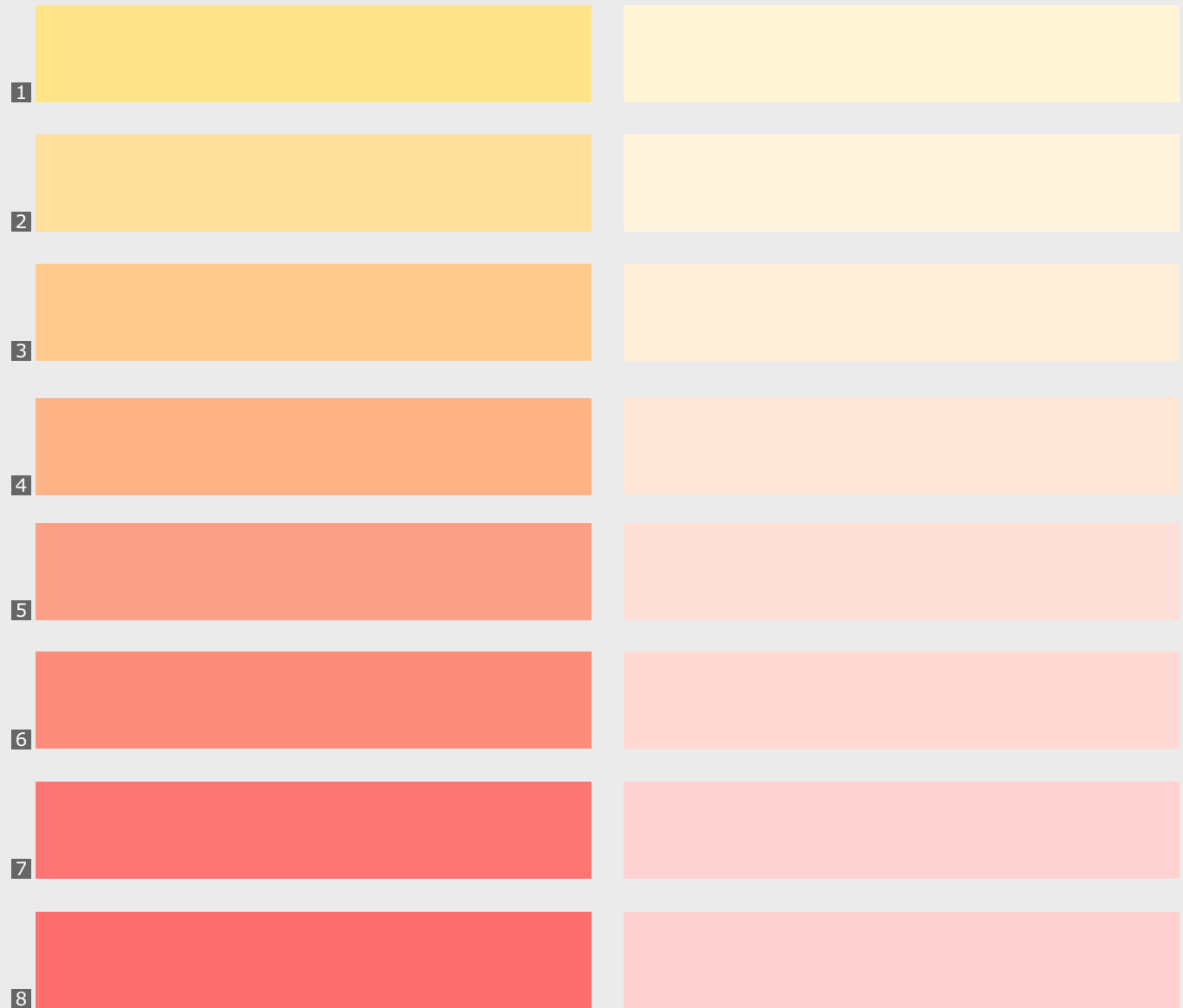
**7** FE 24 10  
C:0 M:90 Y:90 K:0  
R:212 G:29 B:33

**8** FF 00 00  
C:0 M:95 Y:100 K:0  
R:209 G:0 B:27



The colours are also used as 50% and 20% tints.

- 1** 50%: FF EB AE  
20%: FF F3 CE
- 2** 50%: FF D7 A6  
20%: FF EB D2
- 3** 50%: FF C8 9F  
20%: FF E3 CF
- 4** 50%: FF C3 A5  
20%: FF E4 D7
- 5** 50%: FF C8 65  
20%: FF E7 DF
- 6** 50%: FF C7 BB  
20%: FF E8 E4
- 7** 50%: FF C8 C3  
20%: FF E9 E7
- 8** 50%: FF CC CC  
20%: FF E5 E5





These are the secondary colours used on the website.



**1** 00 33 66  
C:96 M:64 Y:20 K:44  
R:21 G:39 B:72

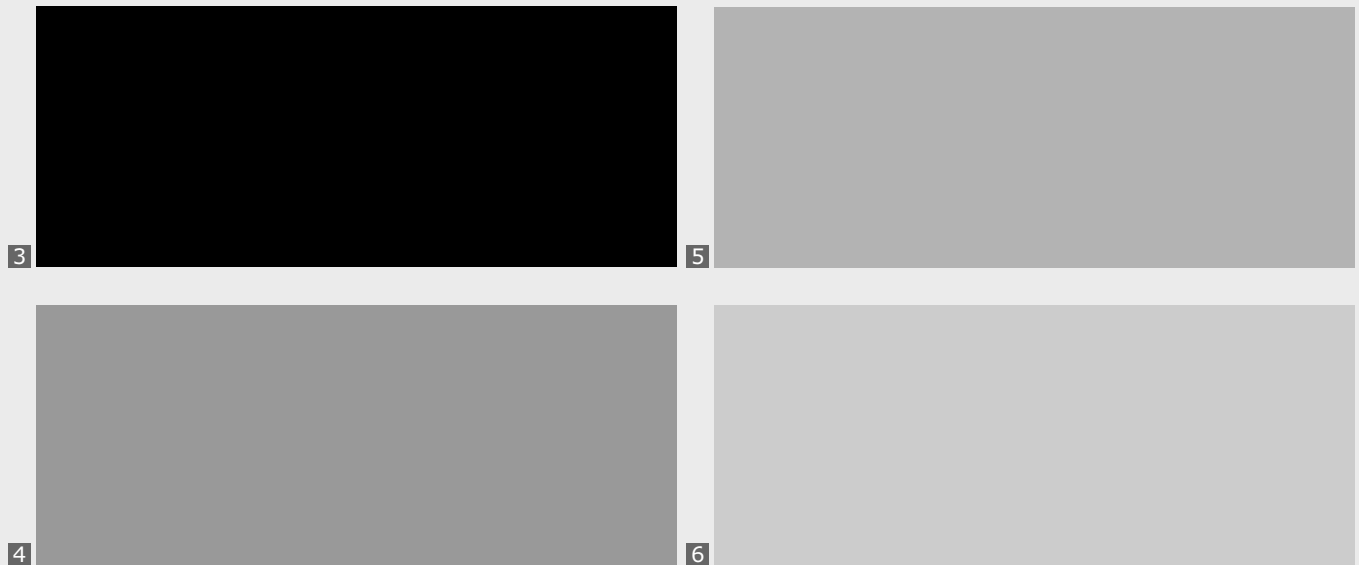
**2** FF FF FF  
C:0 M:0 Y:0 K:0  
R:255 G:255 B:255

**3** 00 00 00  
C:0 M:0 Y:0 K:100  
R:0 G:0 B:0

**4** 99 99 99  
C:0 M:0 Y:0 K:40  
R:156 G:156 B:156

**5** DD DD DD  
C:0 M:0 Y:0 K:30  
R:181 G:181 B:181

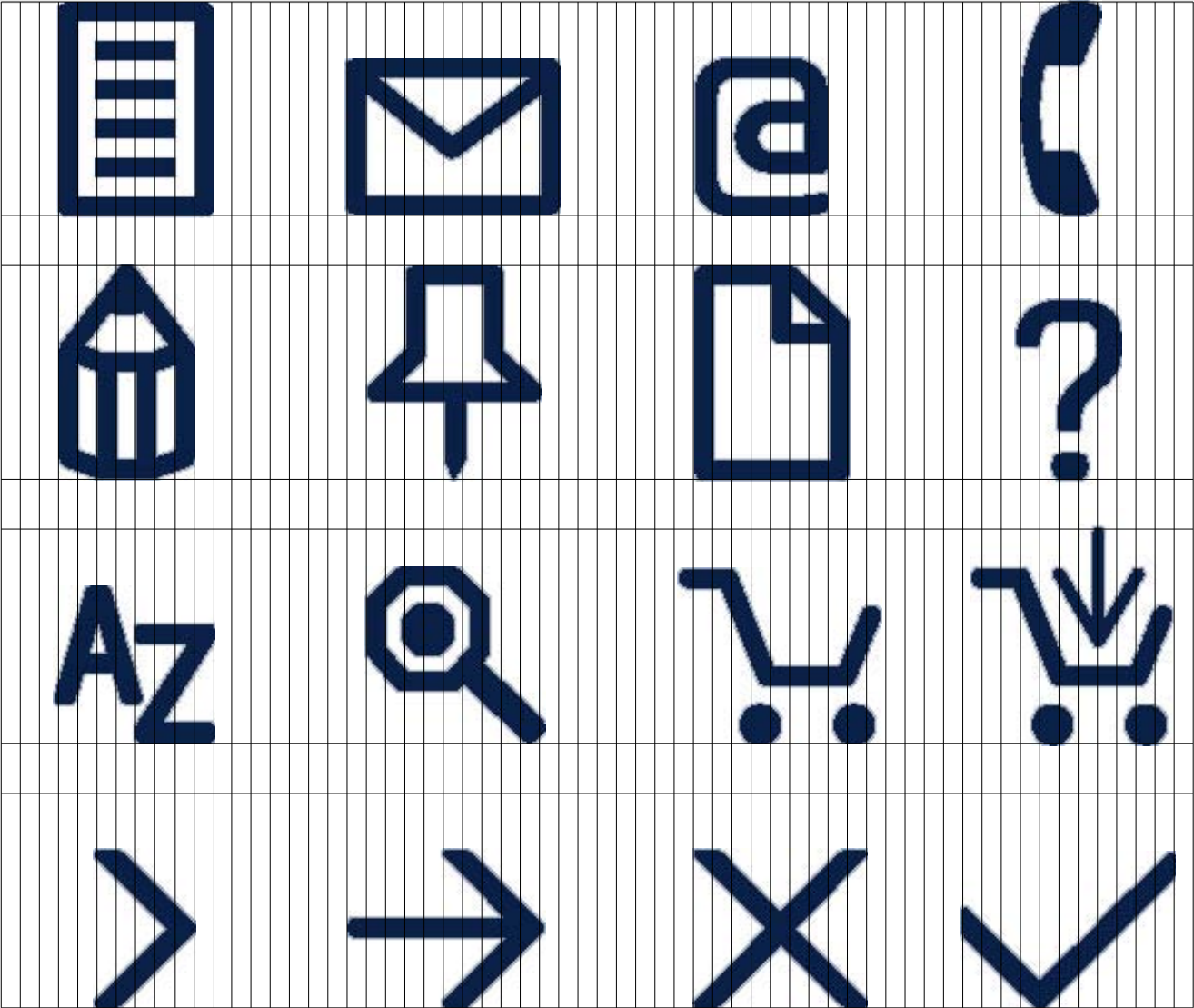
**6** E6 E6 E6  
C:0 M:0 Y:0 K:20  
R:206 G:206 B:206



These are the graphics used online.  
The overall style of the symbols is based on  
the typeface of the logo: Beta Semi bold.

The symbols may be scaled proportionally.





The buttons are designed for online use to provide clear accessible navigation for the user.

There are three button heights as shown.

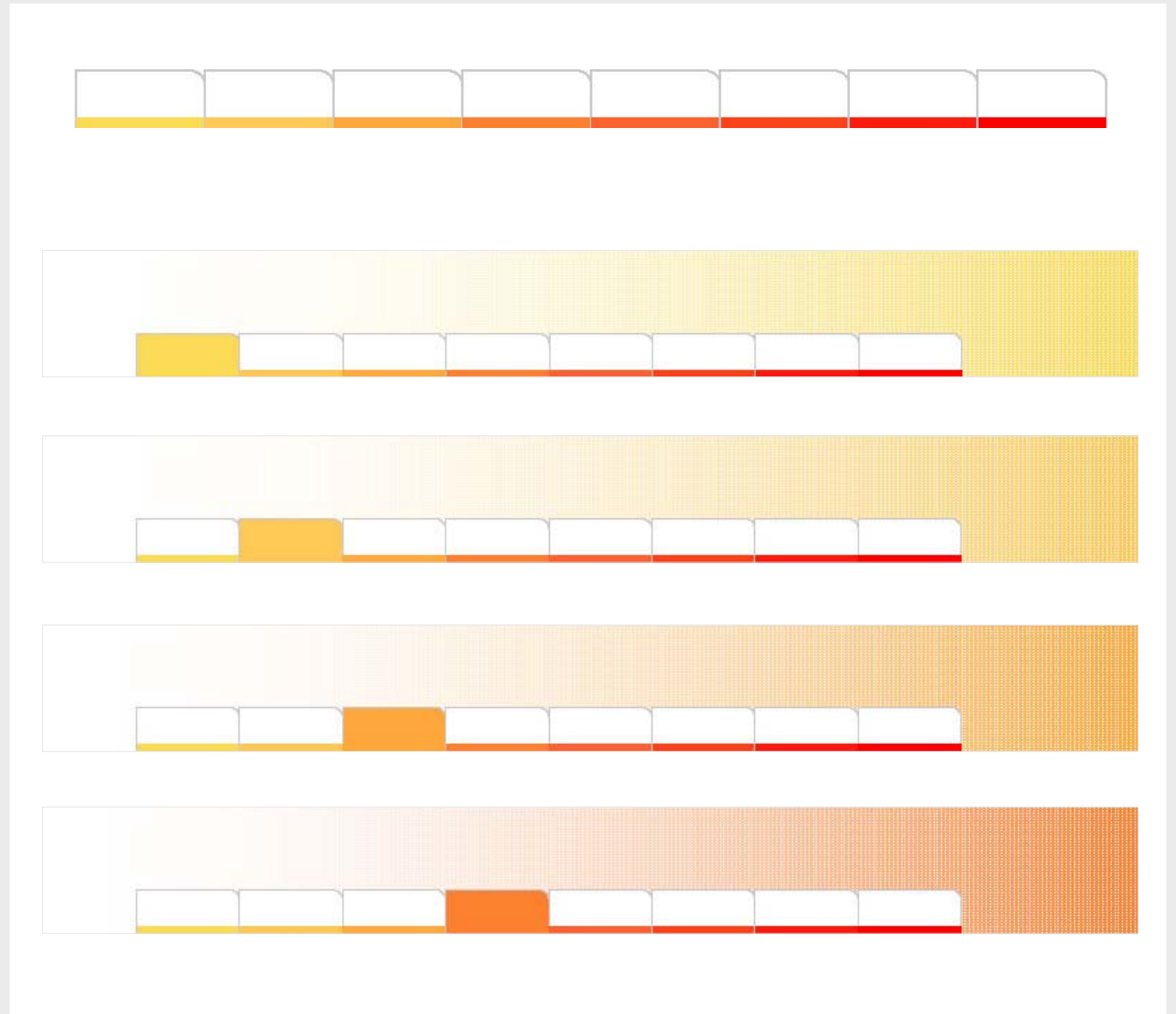


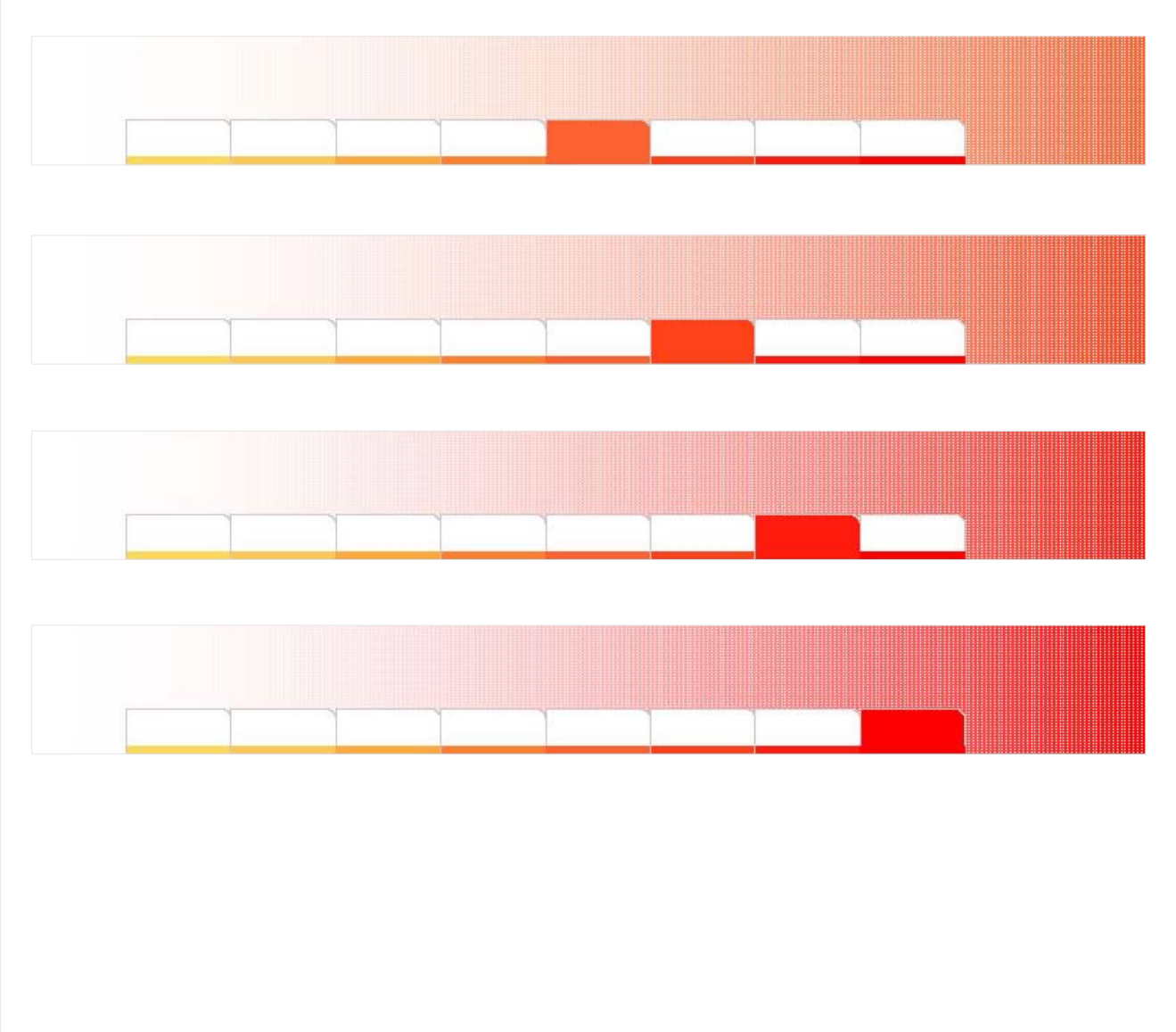
1 19 pixels high

2 12 pixels x 12 pixels

3 15 pixels high

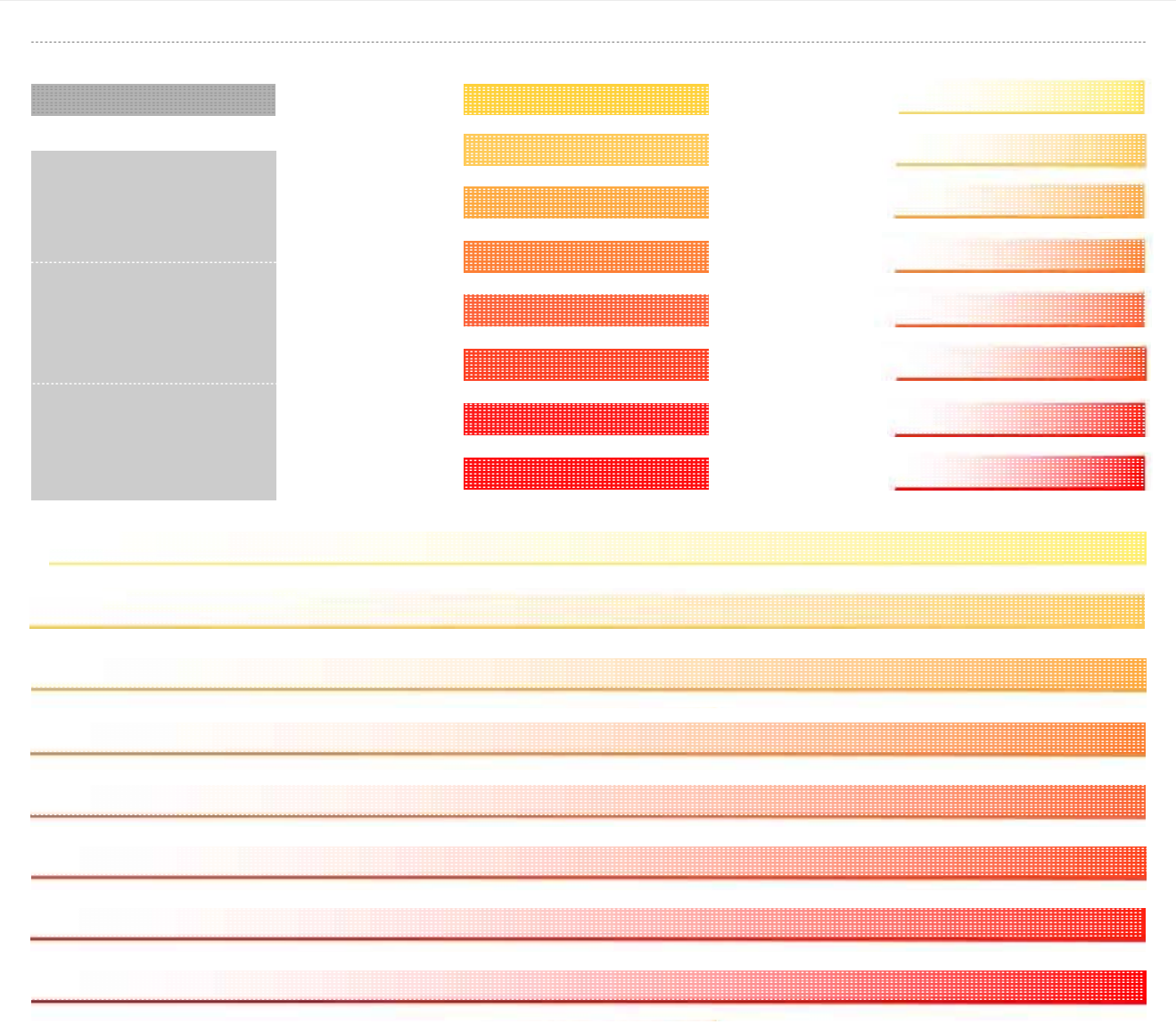
The colour of the tabs corresponds to the colour of the graduation. Each section of the website has a different coloured graduation, ranging from yellow to red.



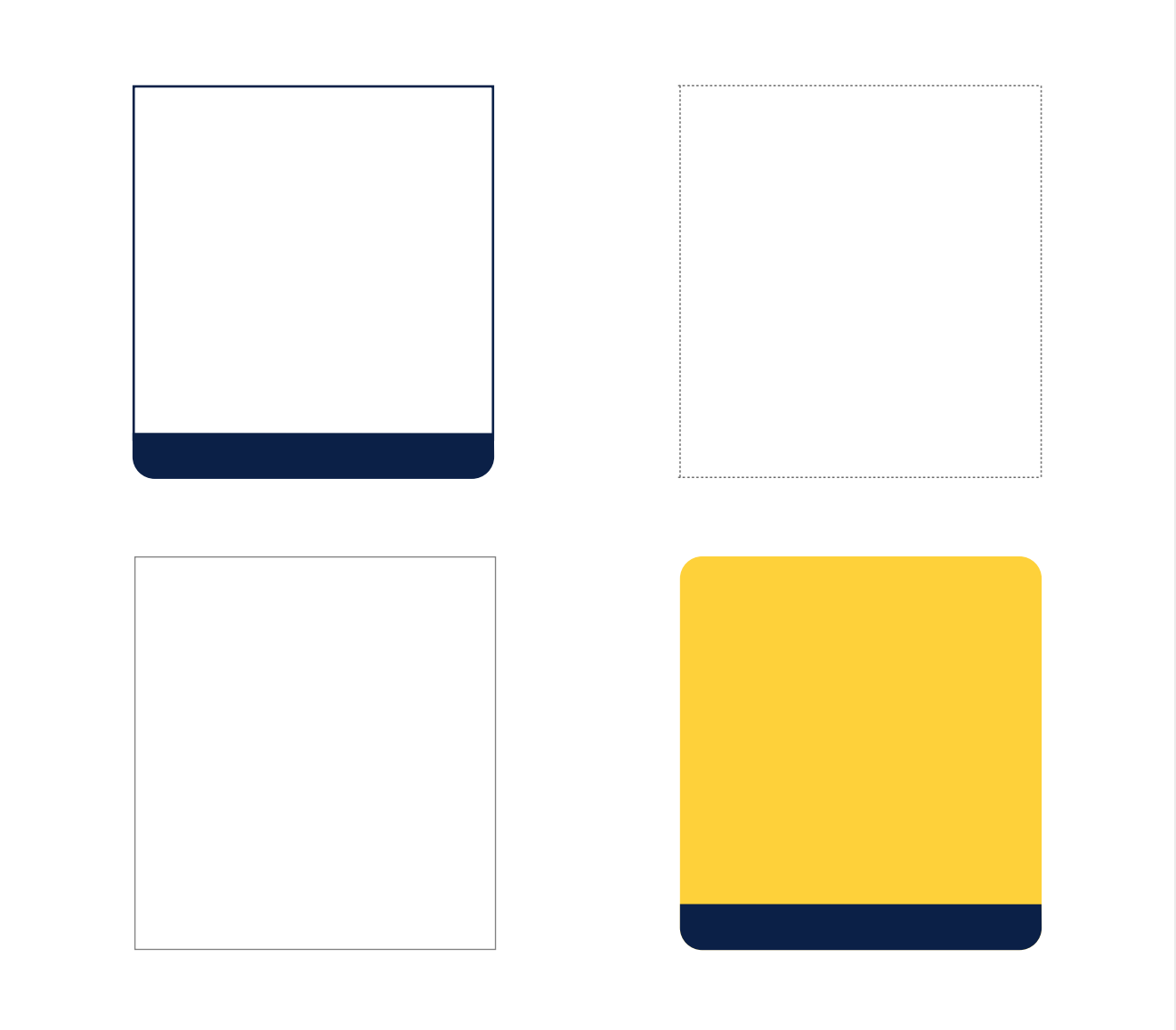


The website can be divided up using the dividers shown. The colour of the divider corresponds to the colour scheme of the website section.

Lines: 1 pixel  
Dots: 1 pixel



Text and images appear in frames as shown.





The following examples illustrate the appropriate use of pictures in the website.



1



4

1 Use photographic images. **Avoid using icons, symbols, illustrations, clip art, etc.!**

2 Images can have a graduation on the side (use provided file 'graduation for images' with 'screen' function in photoshop).



2



5

3 Try to use interesting crops.

4 Text can overlap images if the background image is not too busy.

5 Text can also be positioned on a coloured background above or below images.

6 If no suitable image can be found use text only. Try to avoid clip-art or graphic icons.



3



6

Type styles and sizes

The following styles of type are used.

Link colour is blue.

Text colour is black and 50% black.

➡ Verdana (Normal)

**Verdana (Bold)**

→ **Verdana (Bold)**

Verdana (Normal)

→ Verdana (Normal)

Verdana (Normal)  
50% black

> **Verdana (Bold)**

> Verdana (Normal)

Feature numbers are shown in Beta Semi bold. The selected number is highlighted in gray.

Page numbers are shown in Verdana regular. The selected number is highlighted in black.



# Stationary

- 35 Business card
- 36 Letterhead
- 37 Continuation sheet
- 38 Compliment slip
- 39 DL Envelope
- 40 DL Envelope with address
- 41 A4 Envelope

Format: Business card (85mm x 55mm)  
 Paper: White uncoated  
 Weight: 300gms  
 Colours: **Pantone Red 032**  
 Pantone 128  
 Pantone 648

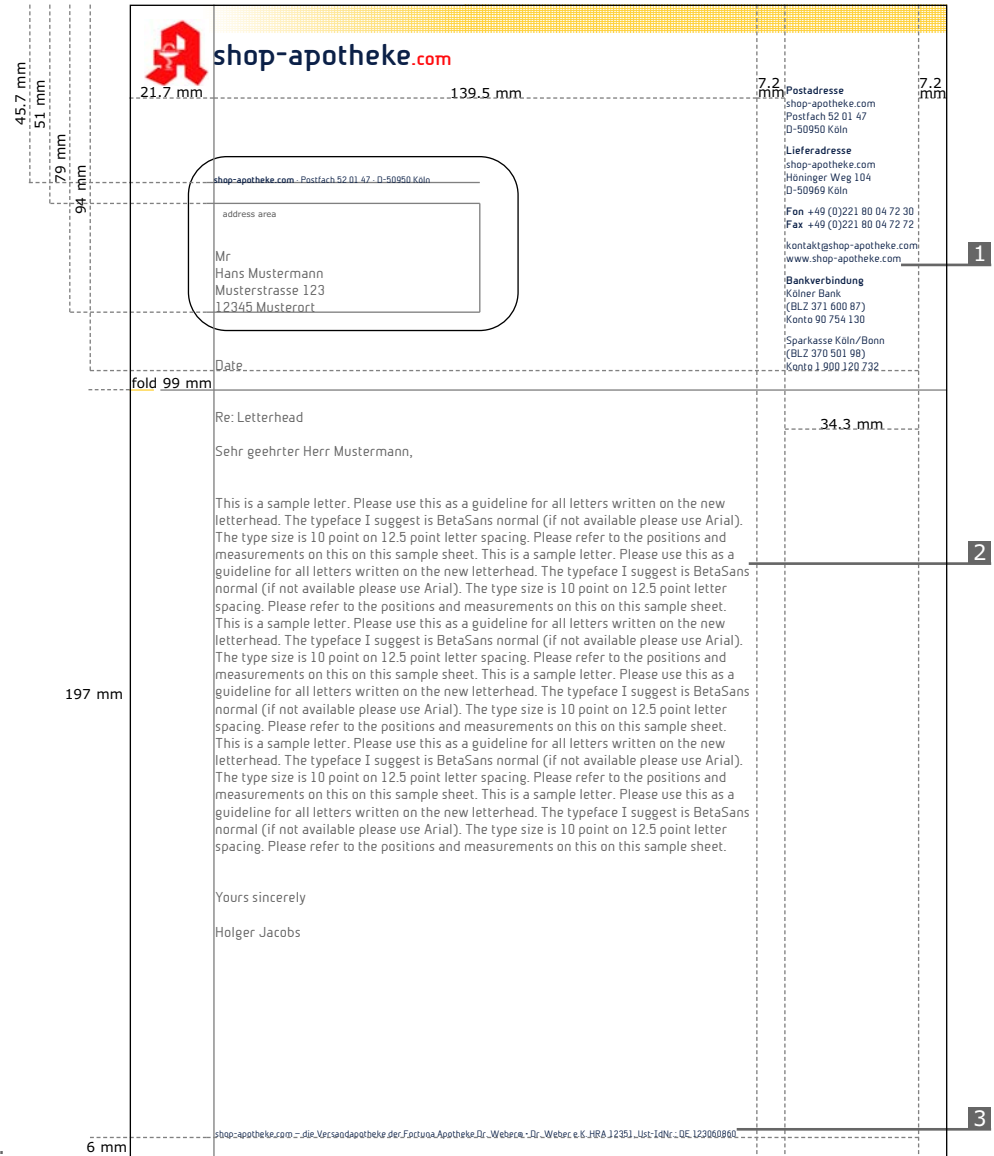


**1** Beta Sans Bold - 7pt, leading 9pt

**2** Beta Sans Normal - 7pt, leading 9pt

Not to scale.

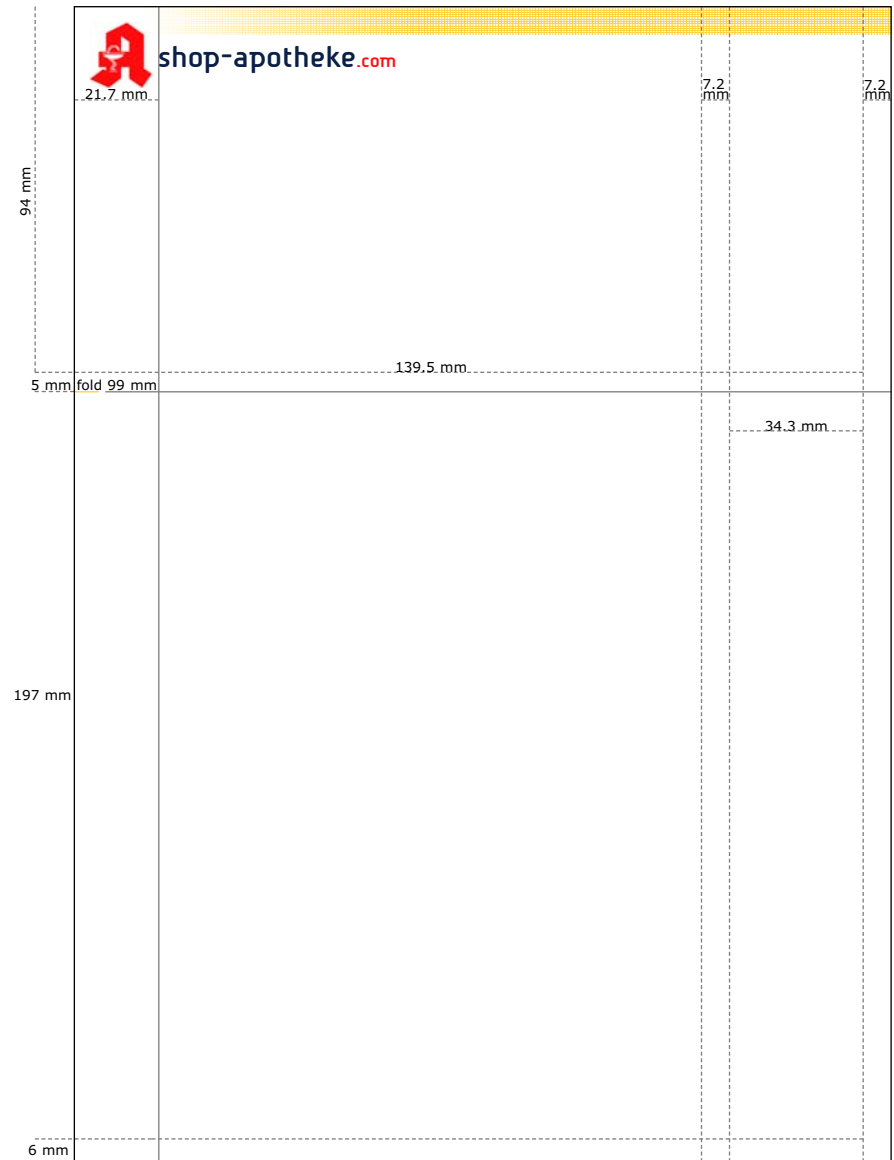
Format: A4 (210mm x 297mm)  
 Paper: White uncoated  
 Weight: 90gms  
 Colours: **Pantone Red 032**  
           **Pantone 128**  
           **Pantone 648**



- 1 Beta Sans Bold / Normal - 7.5pt, leading 9pt
- 2 Beta Semi Normal - 10pt, leading 12.5pt
- 3 Beta Sans Bold / Normal - 6.5pt, leading 8.5pt

Not to scale.

Format: A4 (210mm x 297mm)  
Paper: White uncoated  
Weight: 90gms  
Colours: **Pantone Red 032**  
**Pantone 128**  
**Pantone 648**



Not to scale.

Format: Compliment Slip (210mm x 100mm)  
 Paper: White uncoated  
 Weight: 90gms  
 Colours: **Pantone Red 032**  
**Pantone 128**  
**Pantone 648**



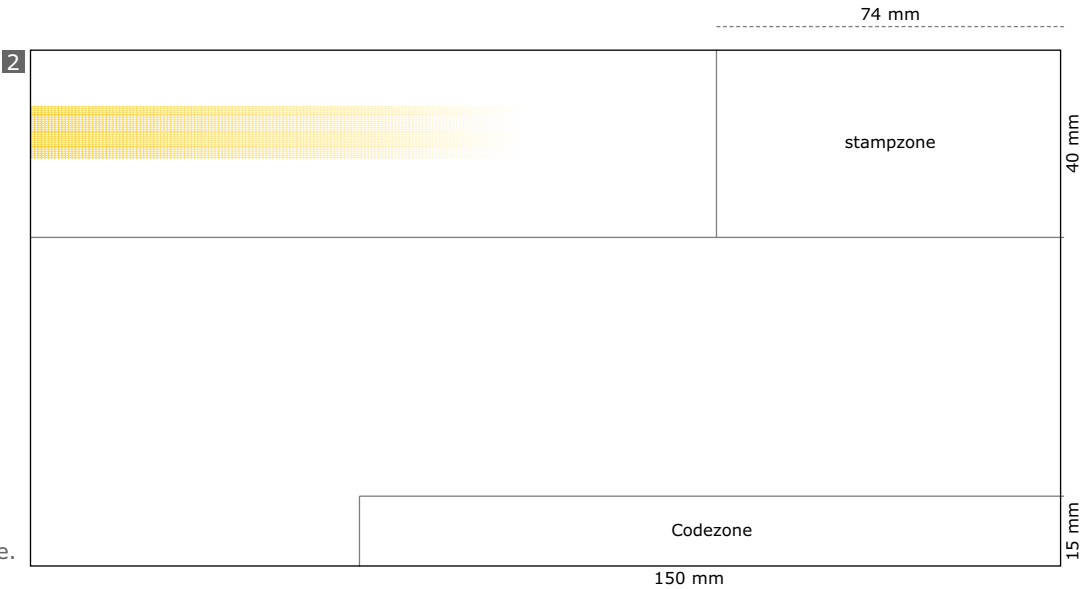
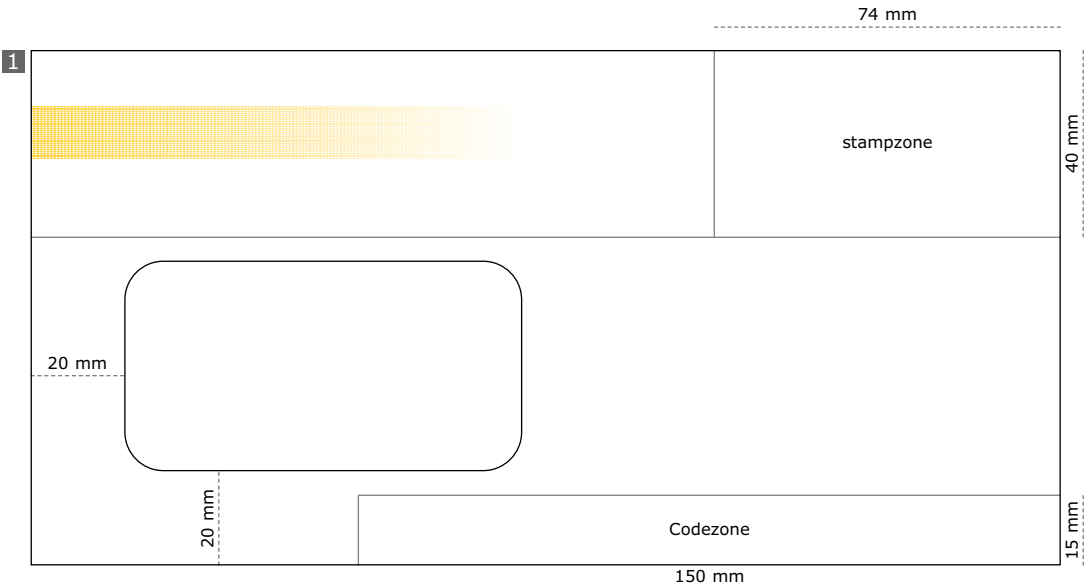
1 Beta Sans Bold / Normal - 7.5pt, leading 9.5pt

2 Beta Sans Normal - 6.5pt, leading 8.5pt

Not to scale.



Format: DL Envelope (220mm x 110mm)  
Paper: DL Envelope  
Weight: 100 gms  
Colours: **Pantone 128**

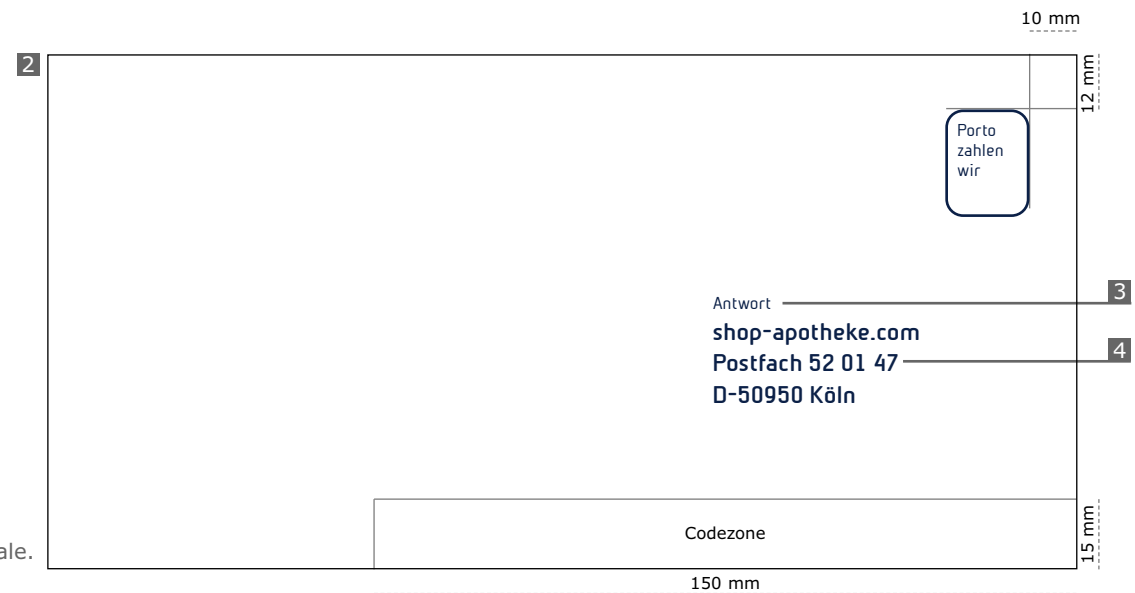
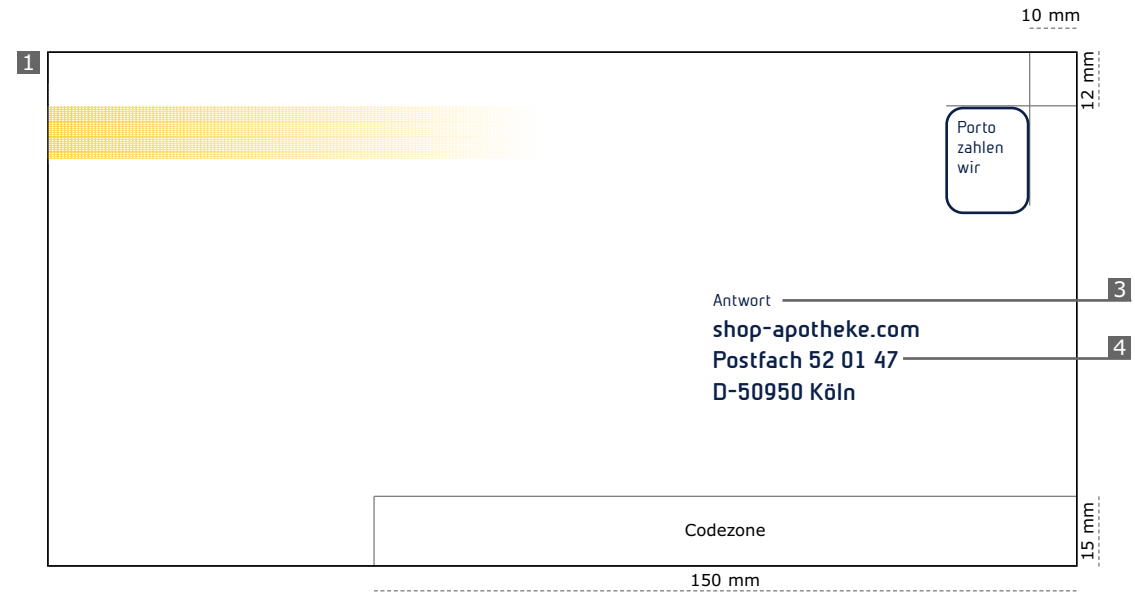


- 1 Envelope with window
- 2 Envelope without window

Not to scale.

150 mm

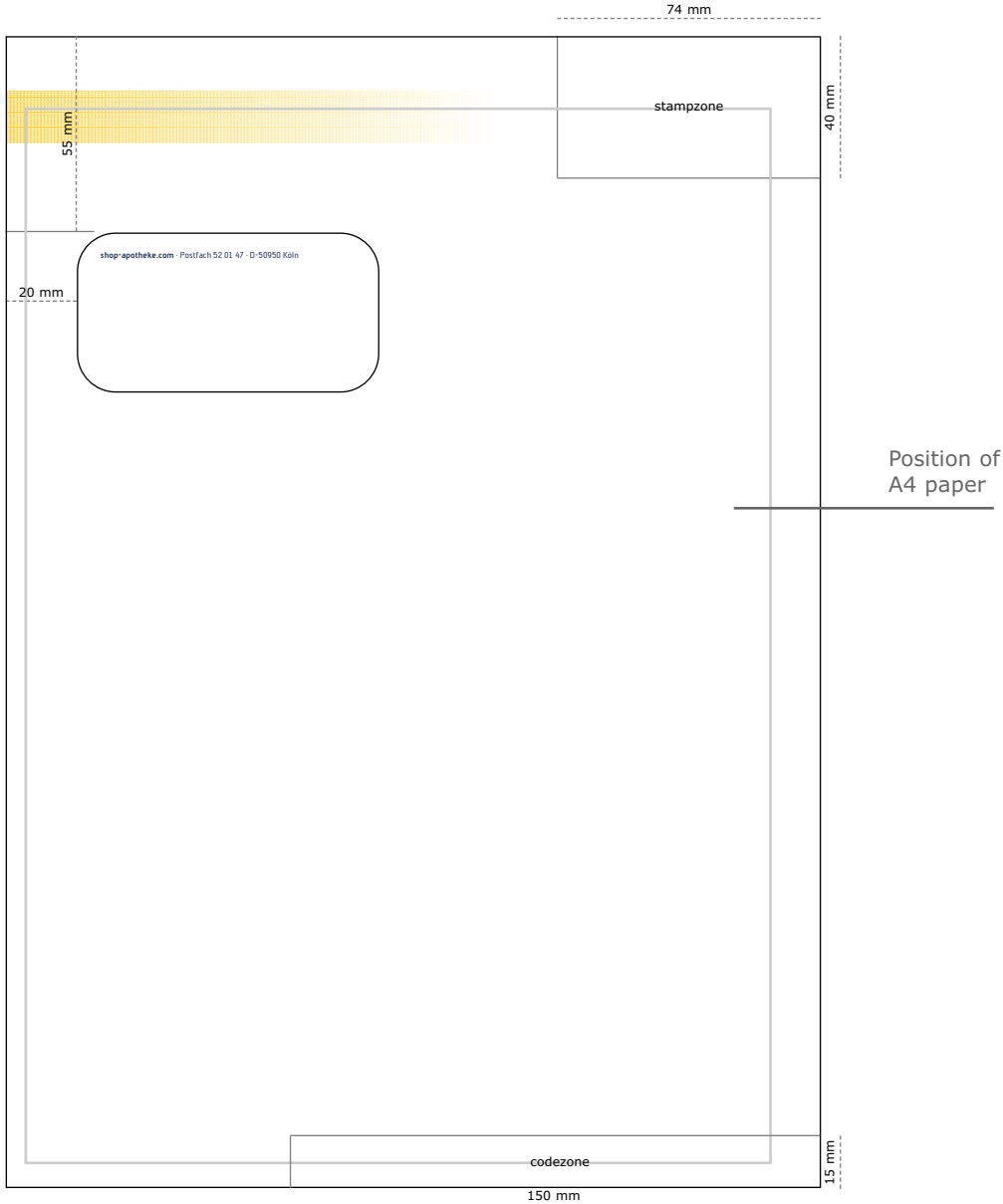
Format: DL Envelope (220mm x 110mm)  
 Paper: DL Envelope  
 Weight: 100 gms  
 Colours: **Pantone 128**  
           **Pantone 648**



Not to scale.

- 1 Envelope with graduation
- 2 Envelope without graduation
- 3 Beta Sans Normal - 10pt, leading 19pt
- 4 Beta Sans Bold - 14pt, leading 19pt

Format: Din C4 (229mm x 324mm)  
Paper: Standard A4 letter  
Weight: 130 gms  
Colours: **Pantone 128**



Not to scale.

# Support & Credits

For support and queries please  
contact Mind Design

Mind Design  
Unit 207  
24 - 28 Hatton Wall  
London EC1N 8JH  
England

Tel: +44 (0)20 7242 0340  
Fax: +44 (0)20 7242 4774  
Email: [info@minddesign.co.uk](mailto:info@minddesign.co.uk)

[www.minddesign.co.uk](http://www.minddesign.co.uk)

© 2005  
Design & Concept by  
Mind Design